

Arsinoe

Building Tomorrow, Today





Arsinoe Project

Acquire your own home in Nea Kerdyllia Beach with an endless sea view. The project includes the construction of 12 residences just 30 meters from the beach, ideal for vacations or permanent residence close to the water. On a plot of 942 sqm, there are 5 ground floor apartments suitable for direct access to the garden and outdoor spaces, 5 first floor maisonettes with attics offering extra space and better views, and 2 independent ground floor residences with attics providing greater privacy and comfort. The project combines comfort, luxury, and accessibility, making it ideal for those who want to live close to nature and the sea.

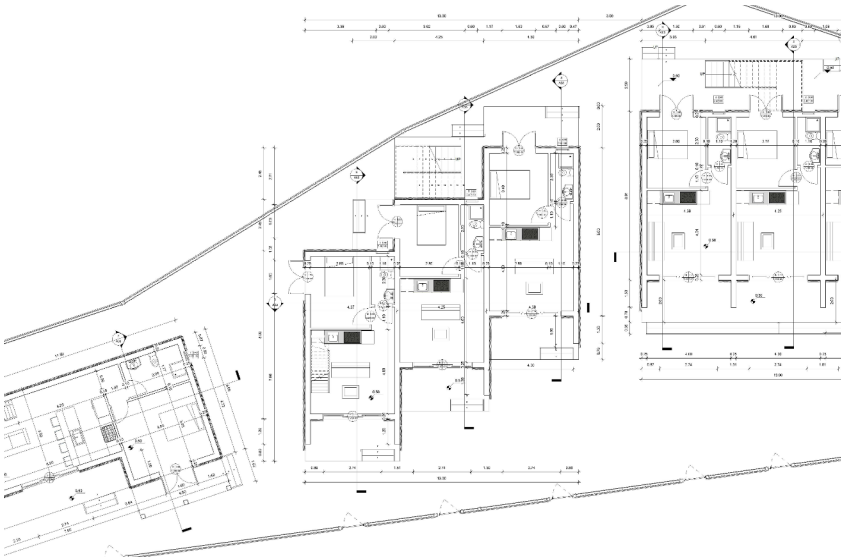
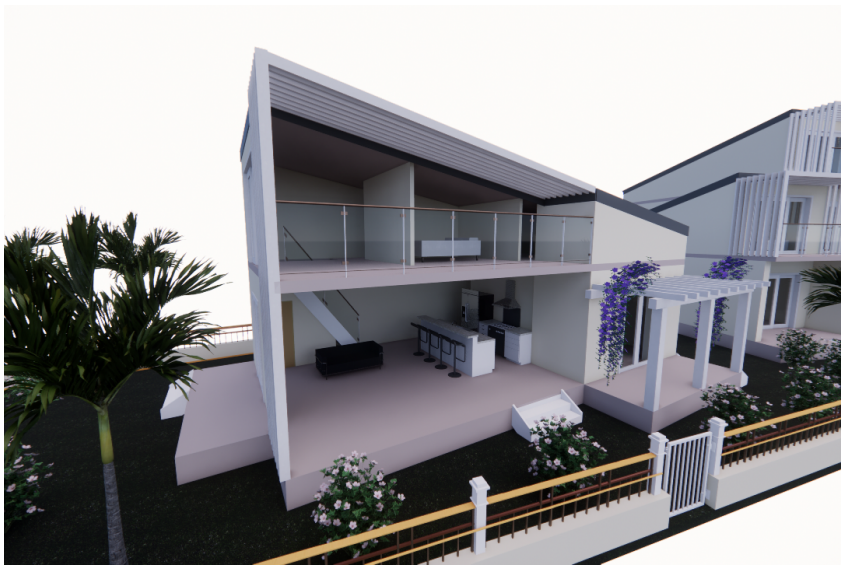




Nea Kerdyllia Beach is a hidden gem on the northern coast of Greece, offering crystal-clear waters and pristine sandy shores.



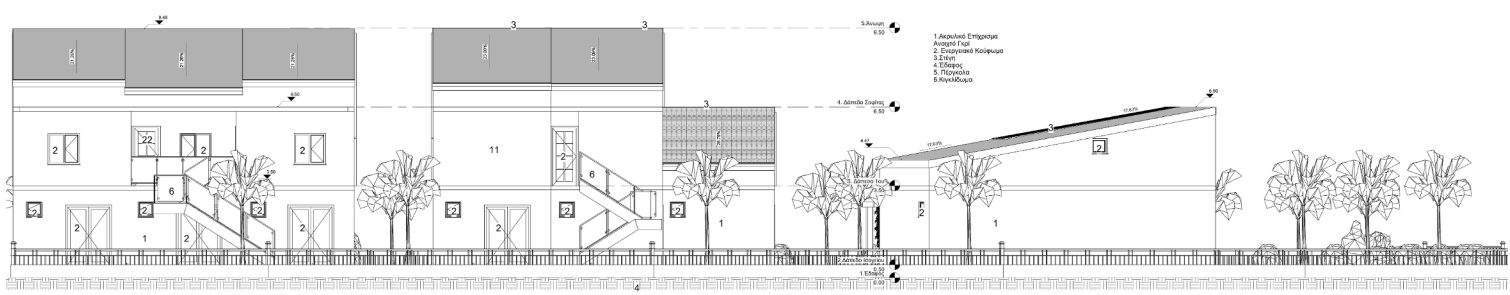
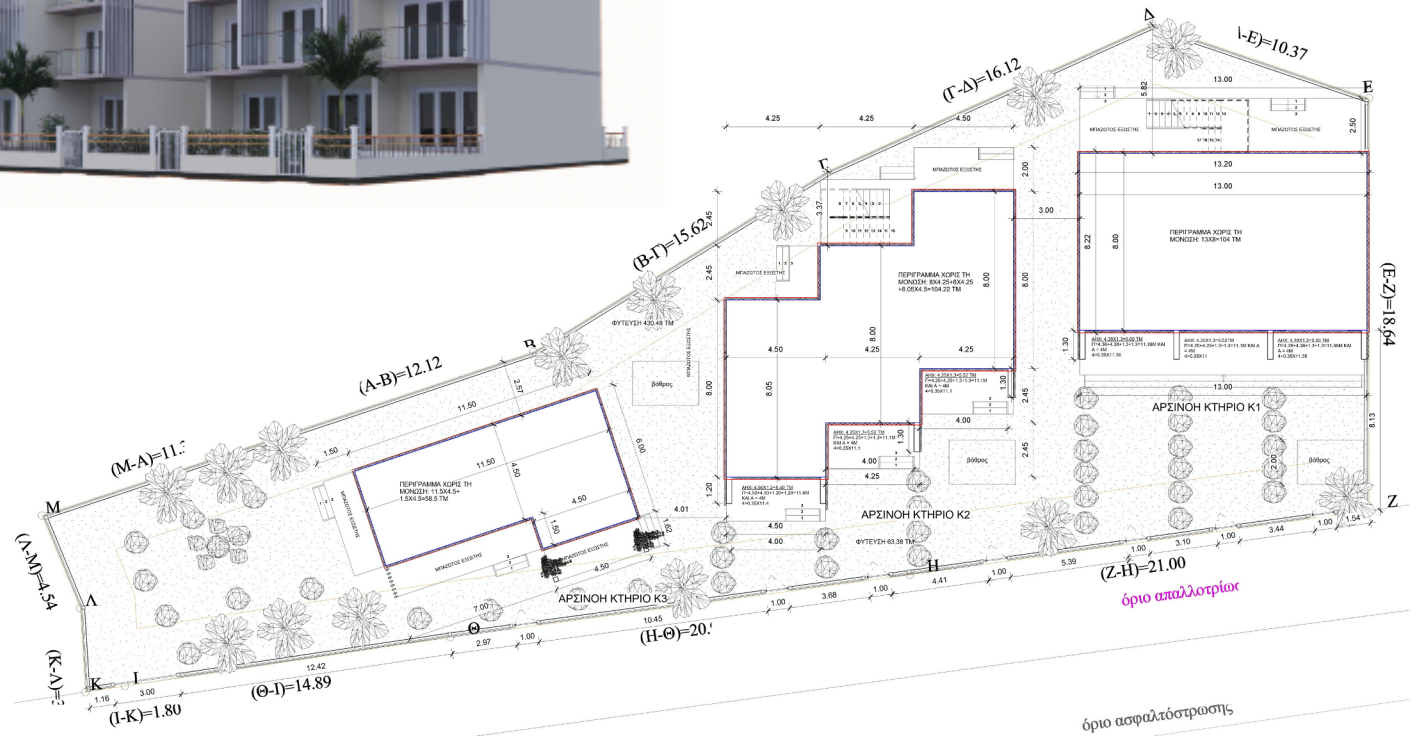




The ground floor apartments include a living room, bedroom, bathroom, and kitchen, along with a balcony and garden. The first-floor maisonettes feature a living room, kitchen, two bedrooms, two bathrooms, and balconies on both levels. The two independent ground-floor residences offer two bedrooms, two bathrooms, a living room, kitchen, balcony, and garden.



- 1. Διακόσιμη Επτάτοξη
- 2. Ανεμόφυτο
- 3. Εξωτερική Κοίτη
- 4. Εξώστες
- 5. Πυλώνας
- 6. Κινητόμαρμα





| Ground Floor Apartment | First Floor Maisonettes | Independent Maisonette |
|-------------------------------|--------------------------------|-------------------------------|
| K11: 35.36 sqm | K14: 59.33 sqm | K23: 52.52 sqm |
| K12: 34.35 sqm | K15: 57.80 sqm | K31: 87.52 sqm |
| K13: 35.36 sqm | K16: 59.33 sqm | |
| K21: 35.04 sqm | K24: 59.52 sqm | |
| K22: 33.25 sqm | K25: 59.69 sqm | |

